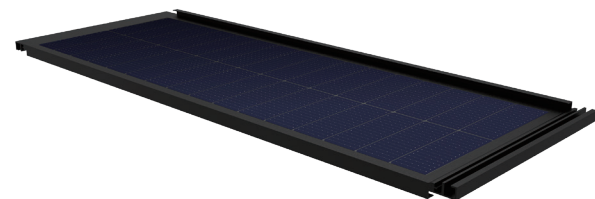


## CYAN WALL SERIES

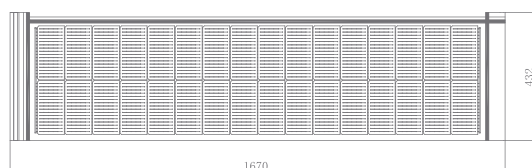
### EM-N16MW



SPECIFICATION	EM-N16MW120	EM-N16MW125	EM-N16MW130
Maximum Power (Pmax)	120	125	130
Open-circuit Voltage (Voc)	11.04	11.31	11.49
Short-circuit Current (Isc)	13.96	14.19	14.43
Maximum Power Voltage (Vmp)	9.12	9.36	9.51
Maximum Power Current (Imp)	13.2	13.48	13.67
Module Efficiency STC (%)	16.63%	17.33%	18.02%

STC : Irradiance : 1000W/m<sup>2</sup> Cell Temperature : 25°C AM=1.5

#### DIMENSION (mm)



#### OPERATING CONDITION

Maximum system voltage	1500Vdc
Maximum fuse rating	30A
Operating temperature(°C)	-40°C~+85°C

#### TEMPERATURE CHARACTERISTIC

Nominal operating temperature	45±2°C
Temperature coefficients of Pmax	-0.29%/°C
Temperature coefficients of Voc	-0.25%/°C
Temperature coefficients of Isc	0.045%/°C

#### PRODUCT FEATURES



##### Building materials

Comply with the standards of building materials



##### Light and compact

Suitable for various roof structures



##### Superior performance

Waterproof design



##### High efficiency photoelectric conversion

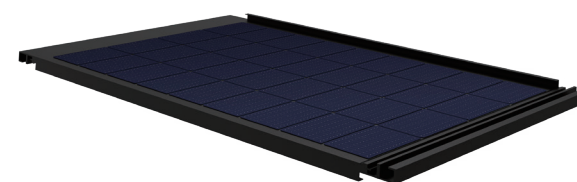
Bring more profit

#### STRUCTURAL MATERIAL

Glass material/ Thickness	Tempered glass 2mm
Packaging material	EPE
Junction box protection level	IP68
Cable length/ Conductor cross-sectional area	(+)350mm;(-)250mm;Customizable/4mm <sup>2</sup>
Connector type/protection level	MC4 compatible/IP68
Packing method	Box packing
Dimensions	1670*432*24.5mm
Cell size	182*91mm
No. of cells	2*16

## CYAN WALL SERIES

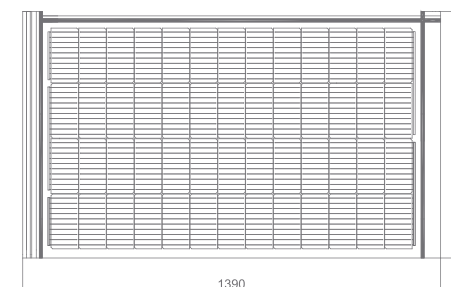
### EM-N18MW



SPECIFICATION	EM-N18MW135	EM-N18MW140	EM-N18MW145
Maximum Power (Pmax)	135	140	145
Open-circuit Voltage (Voc)	24.84	25.35	25.75
Short-circuit Current (Isc)	6.98	7.065	7.185
Maximum Power Voltage (Vmp)	20.52	20.95	21.30
Maximum Power Current (Imp)	6.6	6.685	6.81
Module Efficiency STC (%)	16.16%	16.75%	17.35%

STC : Irradiance : 1000W/m<sup>2</sup> Cell Temperature : 25°C AM=1.5

#### DIMENSION (mm)



#### OPERATING CONDITION

Maximum system voltage	1500Vdc
Maximum fuse rating	30A
Operating temperature(°C)	-40°C~+85°C

#### TEMPERATURE CHARACTERISTIC

Nominal operating temperature	45±2°C
Temperature coefficients of Pmax	-0.29%/°C
Temperature coefficients of Voc	-0.25%/°C
Temperature coefficients of Isc	0.045%/°C

#### PRODUCT FEATURES



##### Building materials

Comply with the standards of building materials



##### Light and compact

Suitable for various roof structures



##### Superior performance

Waterproof design



##### High efficiency photoelectric conversion

Bring more profit

#### STRUCTURAL MATERIAL

Glass material/ Thickness	Tempered glass 2mm
Packaging material	EPE
Junction box protection level	IP68
Cable length/ Conductor cross-sectional area	(+)350mm;(-)250mm;Customizable/4mm <sup>2</sup>
Connector type/protection level	MC4 compatible/IP68
Packing method	Box packing
Dimensions	1019*820*24.5mm
Cell size	182*91mm
No. of cells	4*9

